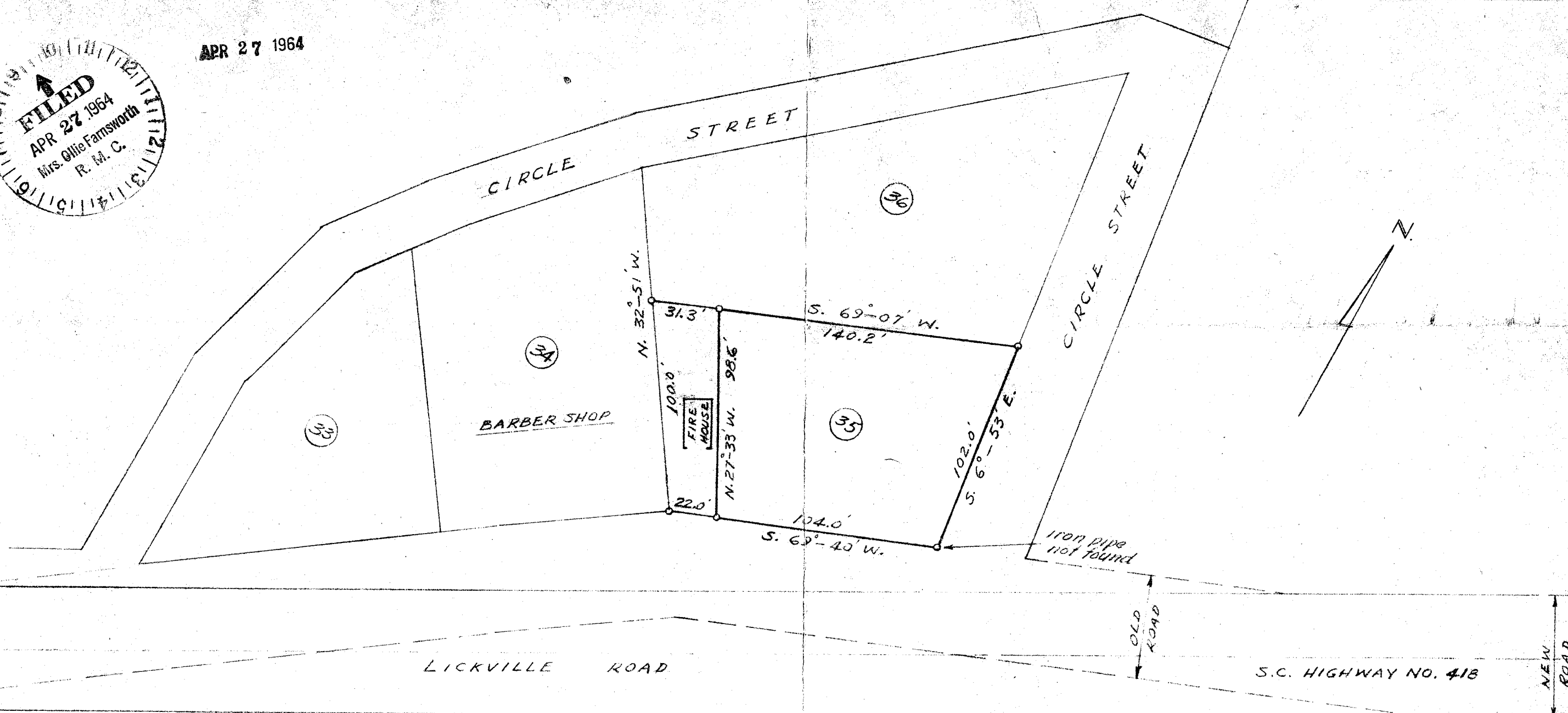
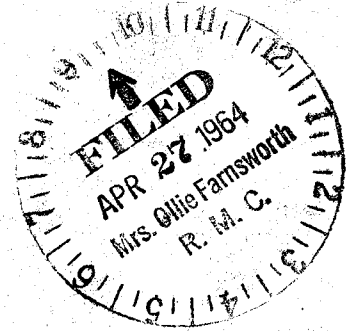


APR 27 1964

193



This Plat is taken from Sub-Division of The Residential Properties of Fork Shoals, S.C. of Riegel Textile Corporation located in Greenville County, Fork Shoals, S.C. by Pickell and Pickell Engineers, Greenville, S.C. Dated February, 1953.

This Plat is made to show changes in Lot No. 35 to provide space for existing Fire House. Surveyed March 11, 1964

BY - H. H. Golden
Not Registered

77-193

30422

100
Pate-JV

PLAT			
LOT NO. 35 · FORK SHOALS			
RIEGEL TEXTILE CORPORATION			
ENGINEERING DEPT., WARE SHOALS, S.C.			
MADE BY	IV. IV. G.	FILE NO.	DRG. NO.
CHECKED BY			W-360-A
APPROVED BY			
SCALE	1" = 50.0'	DATE	MARCH 14, 1964

30422 Filed This 27 day of April 1964
And Recorded in Vol. 77 Page 193 at 9:30 P. M.

H. H. Golden
Register Mesne Conveyance Greenville County, S. C.